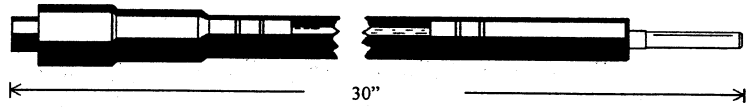


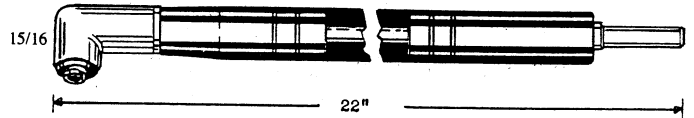


THE ORIGINAL DRILLING ATTACHMENT

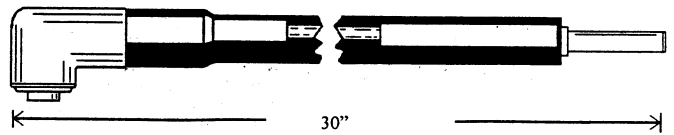
TERRY NO. N 6 - Straight Flexible (Snake) Drilling Attachment with 1/4" - 28 threaded spindle



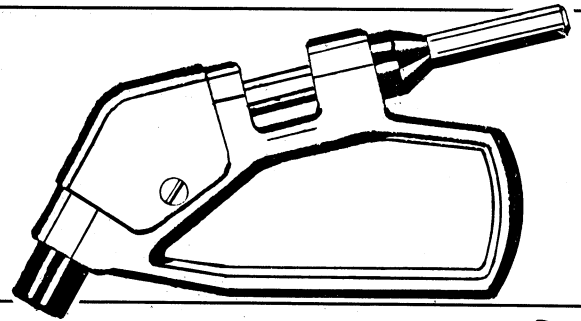
TERRY NO. N 51-1 Right Angle Flexible Drilling Attachment. (1/4-28 THD)



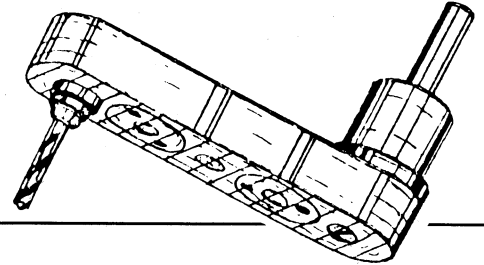
TERRY NO. N 53 - Right Angle Flexible Drilling Attachment. A combination of the No. 3 Right Angle Head Assembly from the Terry No. 3 (1/4-28 THD)



TERRY NO. 70 - Geared Type 45° (Pork Chop) Drilling Attachment with 1/4" - 28 Threaded Drill Spindle.



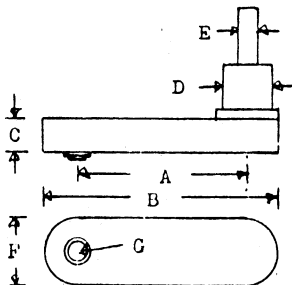
TERRY NO. T 25 - Flat Offset Drilling Attachment (Short Handle) with 1/4"-28 threaded spindle. The 2-5/16" offset gives greater access to tight places. Needle Bearings in the Handle, Hardened Alloy Steel Drive Shaft and Gears make this a most durable tool.



TERRY NO. T 235 - Flat Offset Drilling Attachment (Long Handle) with 1/4"-28 threaded spindle.

Same as T 25 above, but with long handle.

Capacity - 1/4" maximum



- DIMENSIONS**
- A - 2-5/16"
 - B - 3-3/16"
 - C - 7/16"
 - D - 11/16"
 - E - 1/4"
 - F - 7/8"
 - G - 1/4 - 28 thread

