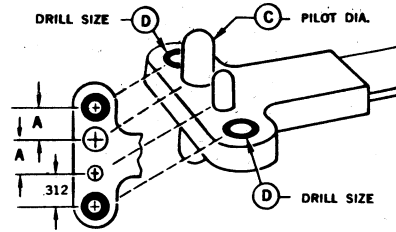


# PLATE NUT DRILL JIG

## SINGLE WING TYPE

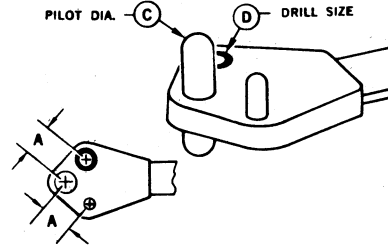
Designed for accurate drilling of rivet holes for plate nuts.

PART NO.	BOLT SIZE REF.	A	C	D
AAT518G	# 6	.344	.139	# 40
AAT518H	# 8	.344	.164	# 40
AAT518J	# 10	.344	.191	# 40
AAT518K	1/4	.344	.248	# 40



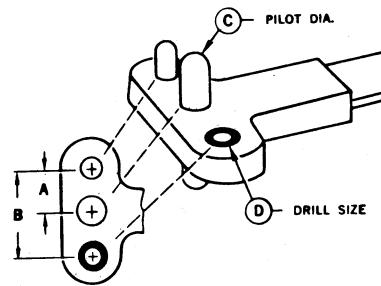
## CORNER WING TYPE

PART NO.	BOLT SIZE REF.	A	C	D
AAT518R	# 6	.344	.139	# 40
AAT518S	# 8	.344	.164	# 40
AAT518T	# 10	.344	.191	# 40
AAT518U	1/4	.500	.248	# 40



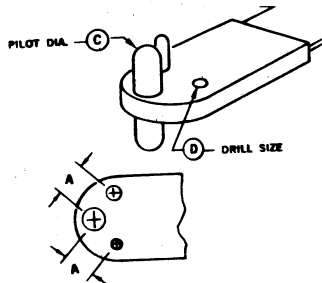
## DOUBLE WING TYPE

PART NO.	BOLT SIZE REF.	A	B	C	D
AAT518A	# 6	.344	.688	.139	# 40
AAT518B	# 8	.344	.688	.164	# 40
AAT518C	# 10	.344	.688	.191	# 40
AAT518D	1/4	.500	1.000	.248	# 40



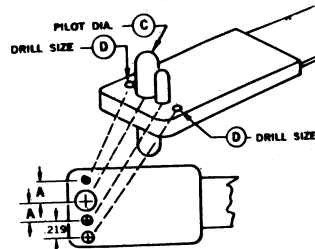
SPECIALS MANUFACTURED TO DRAWING

# MINIATURE PLATE NUT DRILL JIG



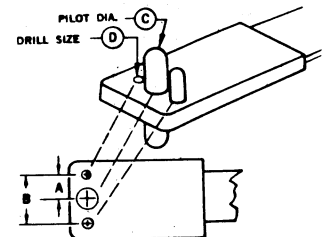
## CORNER WING TYPE

PART NO.	BOLT SIZE REF.	A	C	D
AAT518-SA	#4	.203	.112	#40
AAT518-SB	#6	.218	.139	#40
AAT518-SC	#8	.234	.164	#40
AAT518-SD	#10	.250	.191	#40



## SINGLE WING TYPE

PART NO.	BOLT SIZE REF.	A	C	D
AAT518-PA	#4	.203	.112	#40
AAT518-PB	#6	.218	.139	#40
AAT518-PC	#8	.234	.164	#40
AAT518-PD	#10	.250	.191	#40
AAT518-PE	#1/4	.281	.248	#40



## DOUBLE WING TYPE

PART NO.	BOLT SIZE REF.	A	B	C	D
AAT518-NA	#4	.203	.406	.112	#40
AAT518-NB	#6	.218	.436	.139	#40
AAT518-NC	#8	.234	.468	.164	#40
AAT518-ND	#10	.250	.500	.191	#40
AAT518-NE	#1/4	.281	.562	.248	#40